



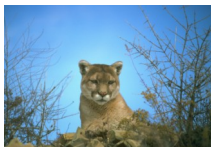
Mountain Lion Sighting

April 24th, 2011 @ 9:45 p.m.

At the above date and time ADT Patrol Officer's observed a Adult Mountain Lion, approximately 130-140 lbs., with a 3-4 foot tail run down a common area hillside onto and across Palisades Drive, leaping over the cinderblock wall and into the Santa Yenz Canyon Park, wash basin area. It was sighted again walking down the concrete basin into the foliage and out of sight.

While this is at current an isolated incident and the first confirmed ADT Patrol sighting since the early 1990's, we felt taking a proactive approach, to aid in the safety of our clients was a good idea. These are some recommendations taken from the California Department of Fish and Game website;

"More than half of California is mountain lion habitat. Mountain lions generally exist wherever deer are found. They are solitary and elusive, and their nature is to avoid humans. Mountain lions prefer deer but, if allowed, they also eat pets and livestock. In extremely rare cases, even people have fallen prey to mountain lions."



"Mountain lions that threaten people are immediately killed. Moving problem mountain lions is not an option. It causes deadly conflicts with other mountain lions already there. Or the relocated mountain lion returns."

Since the Highlands is surround by protected State lands we do reside in Mountain Lion country, as such following some simple tips can help reduce the likely hood of unwanted encounters;

- Don't feed deer; it is illegal in California and it will attract mountain lions.
- Deer-proof your landscaping by avoiding plants that deer like to eat.
- Trim brush to reduce hiding places for mountain lions.
- Don't leave small children or pets outside unattended.
- Install motion-sensitive lighting around the house.
- Don't allow pets outside when mountain lions are most active—dawn, dusk, and at night.
- Bring pet food inside to avoid attracting raccoons, opossums and other potential mountain lion prey.

This sighting has already been reported to the Department of Fish & Game, as well as the State Park Rangers (assigned to the Topanga/Will Rogers sector). You will find some contact and reference information on the bottom of this notice if you would like additional information, wish to report your own sightings or just want to learn more about Mountain Lion habitat and behaviors. You may always contact 911 if you witness aggressive behavior, or if you, your pets or family have been a victim of an attack.

— Safety Tips —

Mountain lions are quiet, solitary and elusive, and typically avoid people whenever possible.

Mountain lion attacks on humans are **extremely rare**.

However, conflicts are increasing as California's human population expands into mountain lion habitat.

- **Do not hike, bike, or jog alone.**
- **Avoid hiking or jogging when mountain lions are most active—dawn, dusk, and at night.**
- **Keep a close watch on small children.**
- **Do not approach a mountain lion.**
- **If you encounter a mountain lion, do not run; instead, face the animal, make noise and try to look bigger by waving your arms; throw rocks or other objects. Pick up small children.**
- **If attacked, fight back.**
- **If a mountain lion attacks a person, immediately call 911.**

For More Information Contact the California Department of Fish and Game (DFG)

Sacramento Headquarters – (916) 653-6420

Eastern Sierra, Inland Deserts Region
Ontario — (909) 484-0167

For More Information Contact the California Department of Fish and Game (DFG)

<http://www.dfg.ca.gov/news/issues/lion/>

<http://www.keepmewild.org>

**ADT PATROL 24 HOUR
PALISADES HIGHLANDS
DISPATCH**

(310) 475-4099